



**GeNUCenter**  
**Central Management Station**

**GeNUA**

Security first.

# Control Your IT Security with GeNUCenter

Your IT infrastructure can be protected from the increasingly sophisticated attacks coming from the Internet. Numerous VPN appliances encrypt data communication, and additional firewalls create stringently segregated zones within your network for especially sensitive systems. In theory, such complex setups are very safe. In practice however, a problem will develop: All deployed systems must be correctly configured and continuously taken care of, as the weakest component determines the level of your IT security. But how to keep track of a large number of security systems without extreme administrative effort? GeNUA has developed the Central Management Station GeNUCenter to perform exactly this task.



## Central Management Station for all Security Systems

GeNUCenter helps you keep a grip on your IT security. All GeNUA security solutions can be configured, administrated and continuously monitored via the integrated Central Management Station GUI. Using this overview, it is easy to keep an eye on your IT security and make sure all systems are up-to-date and running flawlessly. Modifications and updates can be simultaneously transferred to any number of systems using the convenient group functionality. Thus, policies can be consistently implemented in the entire network. New additions to your IT security simply are integrated by the Central Management Station and immediately set up with an established configuration.

## Central Administration of these Security Systems:

- ■ Two-Tier Firewall GeNUGate
- ■ Firewall GeNUScreen
- ■ Security Platform GeNUBox
- ■ VPN Appliance GeNUCrypt
- ■ Security Package GeNUCard for Laptops

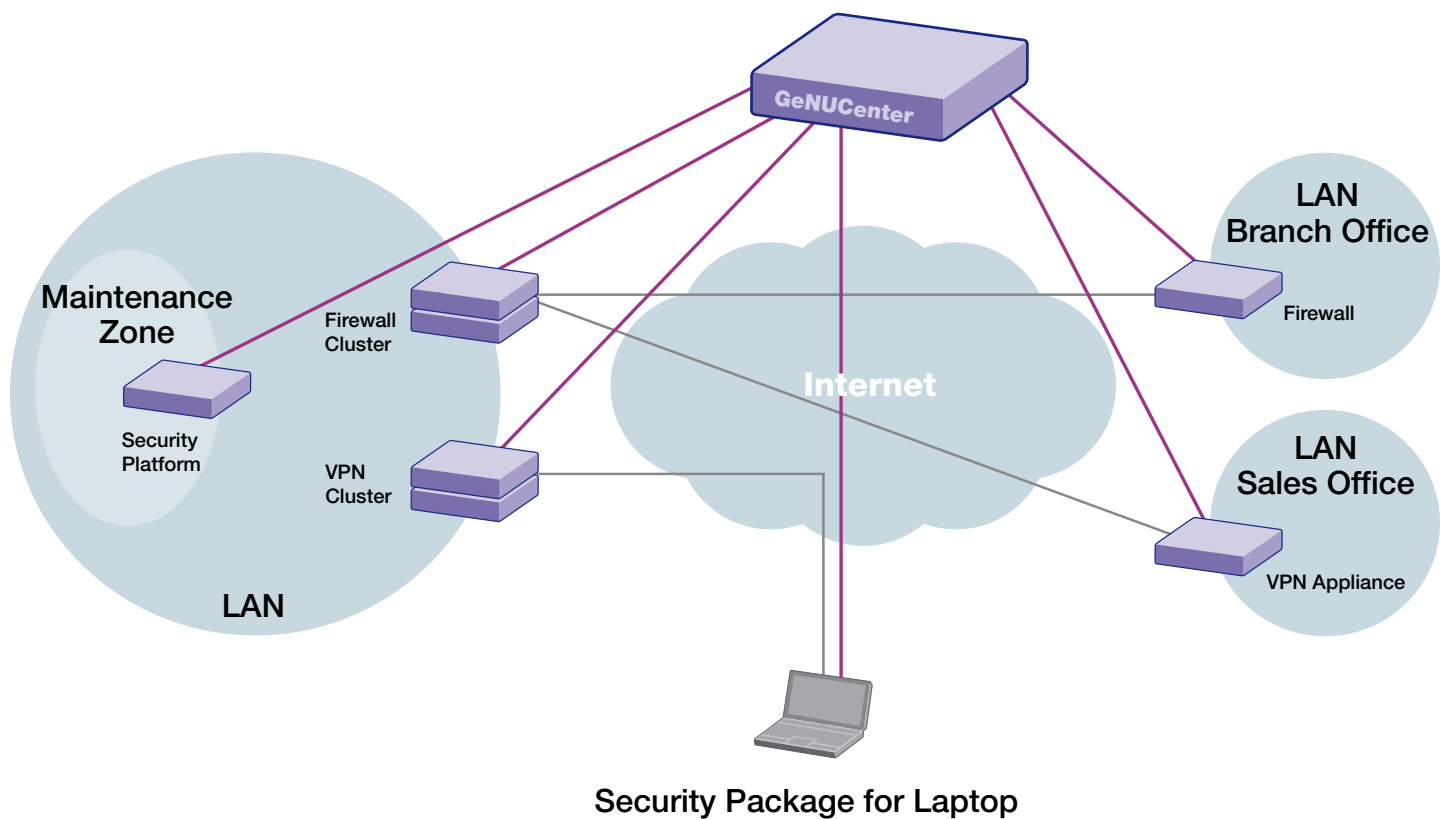
## Increased Security with Less Effort

Using the Central Management Station pays off – the administrative effort is reduced, and the security level improves. The advantages increase with a given network's complexity. Even the admins of small networks definitely will be relieved of numerous tasks by using central management – they can be sure of that!

## Conveniently Administrate Complex Networks

Hierarchical management is a major GeNUCenter feature. No matter how complex your company structure, our management system can precisely map a network structure or organigram from the company headquarters down to individual departments at various locations. Individual permissions can be defined for specific areas, e.g. who may access which data, or surf the Internet without restrictions. You can pool systems into your own custom groups and easily manage them jointly. A company-wide policy can be implemented, e.g. to scan all WWW data for viruses and to filter out active content. Centralized and concise management helps you to strictly enforce even the most complex rules.

## Central Management with GeNUCenter



### Distribute Tasks with Domains of Responsibility

GeNUCenter lets you delegate specific groups of tasks: For example, one admin can handle firewalls in Germany only, while the other is limited to taking care of international VPN connections etc. A change log makes every modification traceable in terms of time and responsible person. Sales partners and consultants for GeNUA products can use this interesting new feature to create specific domains of responsibility for supported customers, and then manage all installed security systems with a Central Management Station.

### Increased Security Based on a High-Level Overview

Risk factors cannot always be avoided, but you can keep an eye on them. GeNUCenter merges all information of the managed security systems and concisely displays it, ranging from software, configuration, and patch versions, over the status of VPN connections, attacks recorded, error messages, to CPU loads and hard drive usage. This helps you to always stay on top of your IT security and quickly react to problems. Based on unified logging, all GeNUA security solutions speak a common and unambiguous language, thus removing the need for time-consuming interpretation of various error messages. Problem solution can commence immediately.



## Management Level Reports

Comprehensive reports are especially popular on the management level when IT investment decisions need to be made: What data traffic trends were noticeable? What is the percentage of spam in e-mails? Is the number of attacks increasing? GeNUCenter supplies these reports as descriptive charts in PDF format. The information can be freely customized and displayed on demand or automatically in regular intervals.

## Your Benefits from GeNUCenter:

- Central administration of GeNUA solutions
- Clearly structured Web interface
- Task delegation based on domains of responsibility
- Exact representation of complex networks
- Convenient administration of grouped security systems
- Consistent policy implementation
- Unified and clear logging
- Comprehensive management level reports

## Wide Range of Hardware Models and Support

To cover all requirements, our Central Management Station is available on four hardware models: GeNUCenter 200, 400, 600 and 800. For our hardware, we offer a next business day replacement service throughout Germany: if a system fails you will be sent an identical replacement unit on the next business day. We also send you replacement units to locations outside Germany, in which case, however, we cannot guarantee delivery on the next business day. For the first three years from buying the hardware, the above support is warranted as a service free of charge. Of course we also offer 24/7 hotline support by phone or e-mail, as well as our regular update service.

## About GeNUA

GeNUA, Gesellschaft für Netzwerk- und Unix-Administration, is specialized on IT security. Since our company was founded in 1992, we have been involved in securing networks and providing sophisticated solutions. Our products comprise high-grade firewalls certified by the German Federal Office for Information Security (BSI), VPN and remote maintenance solutions, intelligent link balancing for Internet connections, and a wide range of services and consulting. Numerous large and medium-sized companies, as well as security conscious federal offices, e.g. the MAN group, MTU Aero Engines, and the German Parliament, rely on GeNUA solutions to protect their IT security.